

SUN

ELECTROMECHANICAL GEAR MOTOR FOR SLIDING GATES UP TO 400 Kg, 24 Vdc
AND UP TO 1200 Kg, 230 Vac



PLUS

High technological materials resistant to weather conditions

UV-resistant plastic covers

Extremely silent mechanics, protected by robust die-cast and powder-coated aluminum body

The release system is ergonomic, efficient and easily accessible

Back-up battery (optional) on board

Gear reduction with extra-large bearing with high performance

Integrated receiver

Magnetic limit switch version upon request

With 24 Vdc control unit CT102 24 (page 104 for technical details)



Manual unlock with lever



CT102 control board



Robust gear reduction with self-standing bearing



CT102 24 control board with integrated receiver

MODELS

CODE	DESCRIPTION
 SUN4224	For sliding gates up to 400 Kg, 24 Vdc motor, control unit with slowdown and electric limit switch, with CT102 24 control board. Integrated receiver (1 pc)

SUN4224

MECHANICAL DATA

speed	cm/s	26*
torque	Nm	18
working cycle	%	80

ELECTRICAL DATA

control board		CT102 24
power	Vac	230
consumption	A	1,2
absorbed power	W	250
capacitor	µF	-
thermoprotection	°C	-

GENERIC DATA

protection degree	IP	44
dimensions (L - D - H)	mm	330 - 210 - 300
weight	kg	12
working temperature	°C	-20 + 55
gate maximum weight	Kg	400

* variable according to the gate weight
Models of 700 kg and upward are recommended for condominium installations

ACCESSORIES



RACK 6
M4 nylon rack
L=1000 mm for
gates up to max
800 kg

PACK OF 4 PCS



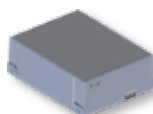
CREM-8
M4 zinc coated
rack 30x8 mm
L=1000 mm

PACK OF 4 PCS



CREM-12
M4 zinc coated
rack 30x12 mm
L=1000 mm

PACK OF 4 PCS



KBP
Battery back-up
kit

PC 1



KCS
Unlock kit with
key

PC 1



TWIN
Interface for
master/slave
function
(SUN7224 and
SUN122)

PC 1



TS
Warning board

PC 1